



# Dual Head Pocket Ultrasound USB&WiFi





### Wireless charging

- Built-in 2 batteries
- Support working while charging



### Anti-skid design

- Safer and more reassuring operation

## 4 colors for you



C10HL:  
Cardiac+linear 2 in 1 probe



### Full Waterproof

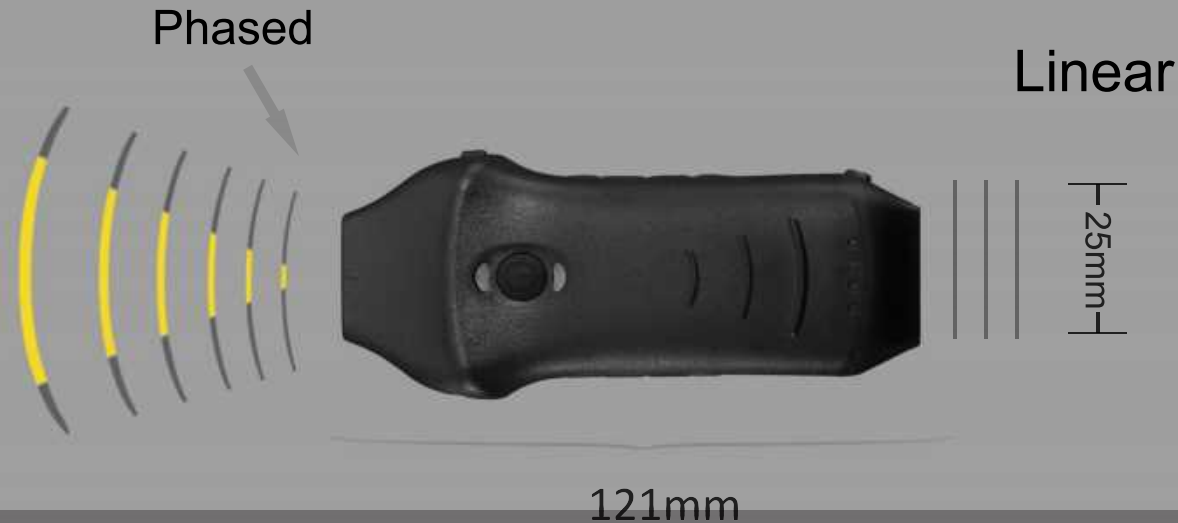
- IP68 level
- Built-in cooling coating



### Only 147g

- Smaller than iPhone
- USB&WiFi 2 connections

# Probe Spece



N.W:174g

Phased array probe

Freq: 2.2/3.6 MHz

Depth: 90-130-160-200mm

Scan angle: 48

Convex array probe

Freq: 2.2/3.6 MHz

Depth: 90-160-200-240mm

Scan angle: 48

Linear array probe

Freq:7.5/10MHz

Depth:20-40-60-100mm

Footprint: L25mm

**Presets:**

**Abdomen, Cardiac, User1, User2**

**Preets:**

**Thyroid, Small parts, pediatrics,  
Vascular, Carotid, Breast Msk, Nerve,  
Aesthetics VesselFlow User1,User2**

# Download “MY USG” from App Store / Google Play



## Compatibility

- ✓ IOS 11.0 or later:  
iphone7(plus) ~ iphone13 series or later  
ipad Air2 ~ipad mini 5~ipad Pro series  
or later
- ✓ Android 14 or later
- ✓ Windows 10 version PC

## Common Specs



Element: Dual 128

Connection: USB&WiFi

Channel: Dual 64

Display mode: B, B/M, Color, PW,  
PDI, B+Color+PW

Presets :

Abdomen, Cardiac, User1, User2, Thyroid, Small parts,  
pediatrics, Vascular, Carotid, Breast Msk, Nerve  
Aesthetics VesselFlow User1, User2



Image frame rate: 24f/s

Cine play: 100/200/500/1000

Auto play, Manual play

Image save: jpg, avi, Mp4 and DICOM

WiFi type: Built-in WiFi

802.11g/20MHz/5G/450Mbps

USB type: Dual USB-C

Host: Android/IOS/Windows Tablet  
, Smart phone, PC



### Measurement:

B: Length, Area/Circumference, Angle, Trace, Distance

GA(CRL,BPD,GS,FL,HC,AC)EFW(BPD,FL)

B+M: Heart rate, Time, Distance, LVID(LVIDd, LVIDs, EF, SV)

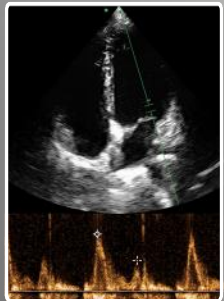
B+PW: Velocity, Heart rate(2), S/D, Depth.

Automatic Vessel Flow Measure: PS, ED, TAMAX, TAMEAN, PI, RI, S/D, DIAM, FL

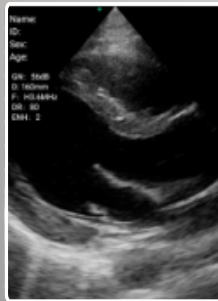
# Clinical Image



Phased probe



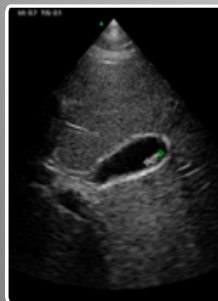
B+PW



B Cardiac



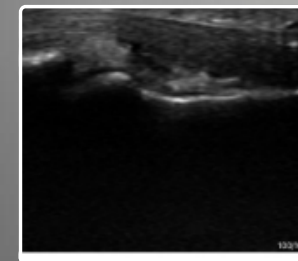
B+Color+PW



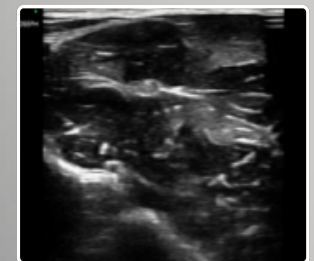
B Gallbladder



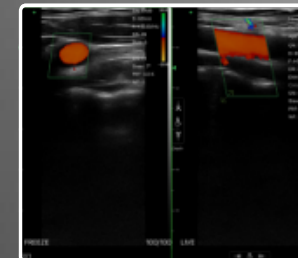
Linear probe



B MSK



B Nerve



B+Color Artery



B+Color Thyroid

# Friendly Operating Interface

## Datasheet

·You can save the scanned picture,video, report



## Dual screen

·Analyze and compare imaging in any 2 modes



## Multiple modes

·Switch between B, B+B, B/M, Color, PW, PDI, B+Color+PW.



## Annote

·Doctors can add markers or notes on the imaging.



## Print

·The imaging or report of patient can be printed by printer.



## Measure Magnify

·Measure the boundary of smaller target more accurately.





# Better ultrasound Better Life



**KTD KONTED**

[www.kontedmed.com](http://www.kontedmed.com)